

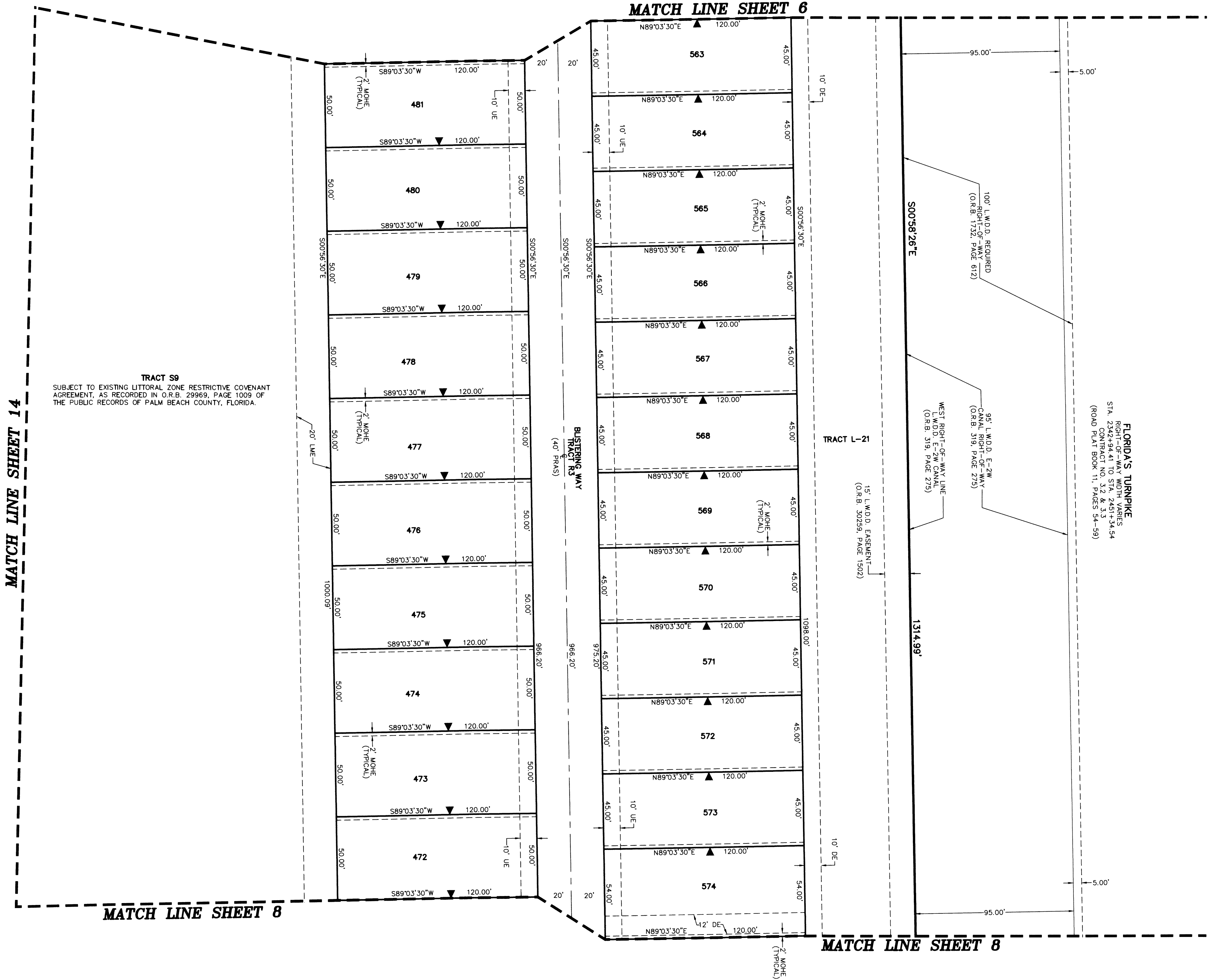
THIS INSTRUMENT PREPARED BY
 DAVID P. LINDLEY
 OF
CAULFIELD and WHEELER, INC.
 SURVEYORS - ENGINEERS - PLANNERS
 7900 GLADES ROAD, SUITE 100
 BOCA RATON, FLORIDA 33434 - (561)392-1991
 CERTIFICATE OF AUTHORIZATION NO. LB3591

FIELDS AT GULFSTREAM POLO PUD - PLAT THREE

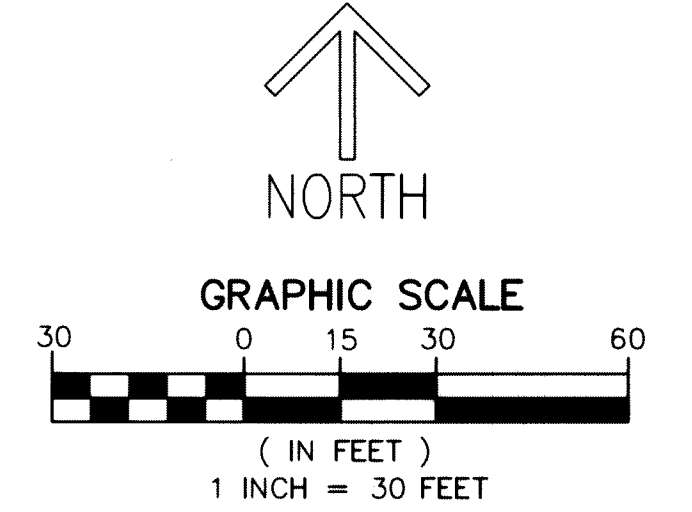
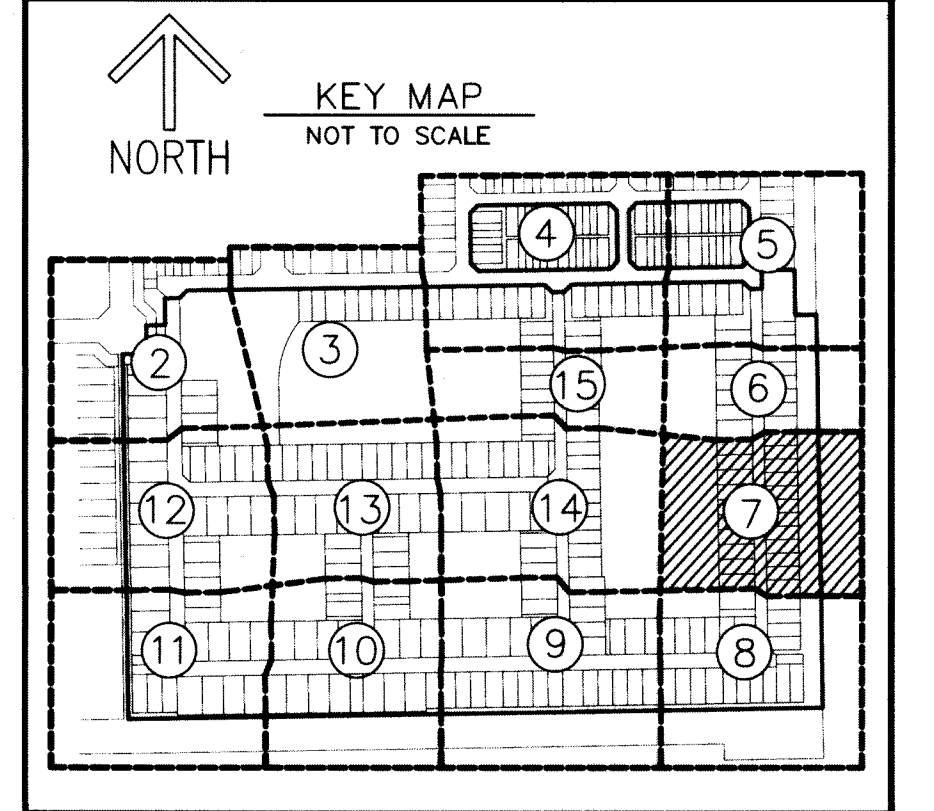
A PLANNED UNIT DEVELOPMENT
 BEING A REPLAT OF TRACTS F, G, H AND J, FIELDS AT GULFSTREAM POLO PUD - PLAT TWO, AS RECORDED IN PLAT BOOK 125, PAGES 130
 THROUGH 137 AND A PORTION OF BLOCK 28, PALM BEACH FARMS CO. PLAT NO. 3, ACCORDING TO THE PLAT THEREOF, AS RECORDED IN PLAT
 BOOK 2, PAGE 45 THROUGH 54 ALL OF THE PUBLIC RECORDS OF PALM BEACH COUNTY, FLORIDA, LYING IN SECTIONS 29 AND 32, TOWNSHIP 44
 SOUTH, RANGE 42 EAST, PALM BEACH COUNTY, FLORIDA

168

SHEET 7 OF 15



TRACT S9
 SUBJECT TO EXISTING LITTORAL ZONE RESTRICTIVE COVENANT
 AGREEMENT, AS RECORDED IN O.R.B. 29969, PAGE 1009 OF
 THE PUBLIC RECORDS OF PALM BEACH COUNTY, FLORIDA.



NOTES
 COORDINATES, BEARINGS AND DISTANCES
 COORDINATES SHOWN ARE GRID
 DATUM = NAD 83 (90/98 ADJUSTMENT)
 ZONE = FLORIDA EAST
 LINEAR UNIT = US SURVEY FEET
 COORDINATE SYSTEM 1983 STATE PLANE
 TRANSVERSE MERCATOR PROJECTION
 ALL DISTANCES ARE GROUND, UNLESS OTHERWISE NOTED
 SCALE FACTOR = 1.0000236
 GROUND DISTANCE X SCALE FACTOR = GRID DISTANCE
 BEARINGS AS SHOWN HEREON ARE GRID DATUM,
 NAD 83 (90/98 ADJUSTMENT), FLORIDA EAST ZONE.

LEGEND/ABBREVIATIONS
 C - CENTERLINE
 Δ - DELTA (CENTRAL ANGLE)
 (C) - CALCULATED
 CB - CHORD BEARING
 CD - CHORD DISTANCE
 DE - DRAINAGE EASEMENT
 E - EASTING (WHEN USED WITH COORDINATES)
 L - ARC LENGTH
 LAE - LIMITED ACCESS EASEMENT
 LB - LICENSED BUSINESS
 LMAE - LAKE MAINTENANCE ACCESS EASEMENT
 LME - LAKE MAINTENANCE EASEMENT
 LSE - LIFT STATION EASEMENT
 L.W.D.D. - LAKE WORTH DRAINAGE DISTRICT
 N - NORTHING (WHEN USED WITH COORDINATES)
 MOHE - MAINTENANCE AND OVERHANG EASEMENT
 O.R.B. - OFFICIAL RECORD BOOK
 PRAS - PRIVATE RESIDENTIAL ACCESS STREET
 PBCUE - PALM BEACH COUNTY UTILITY EASEMENT
 R - RADIUS
 UE - UTILITY EASEMENT
 SWE - SIDEWALK EASEMENT
 (P) - PALM BEACH FARMS CO. PLAT NO. 3
 (PLAT BOOK 2, PAGES 45-54)
 (P1) - FIELDS AT GULFSTREAM POLO PUD - PLAT ONE
 (PLAT BOOK 123, PAGES 80-95)
 (P2) - FIELDS AT GULFSTREAM POLO PUD - PLAT TWO
 (PLAT BOOK 125, PAGES 130-137)
 ▲ - INDICATES "ZERO" SIDE OF LOT LINE
 ■ PRM - DENOTES PERMANENT REFERENCE MONUMENT
 4" x 4" x 24" CONCRETE MONUMENT WITH
 ALUMINUM DISK STAMPED "C&W PRM LB3591"
 ● PCP - DENOTES PERMANENT CONTROL POINT
 NAIL AND METAL DISK STAMPED "PCP LB3591"